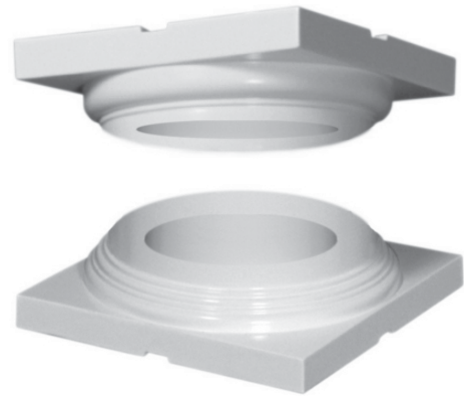
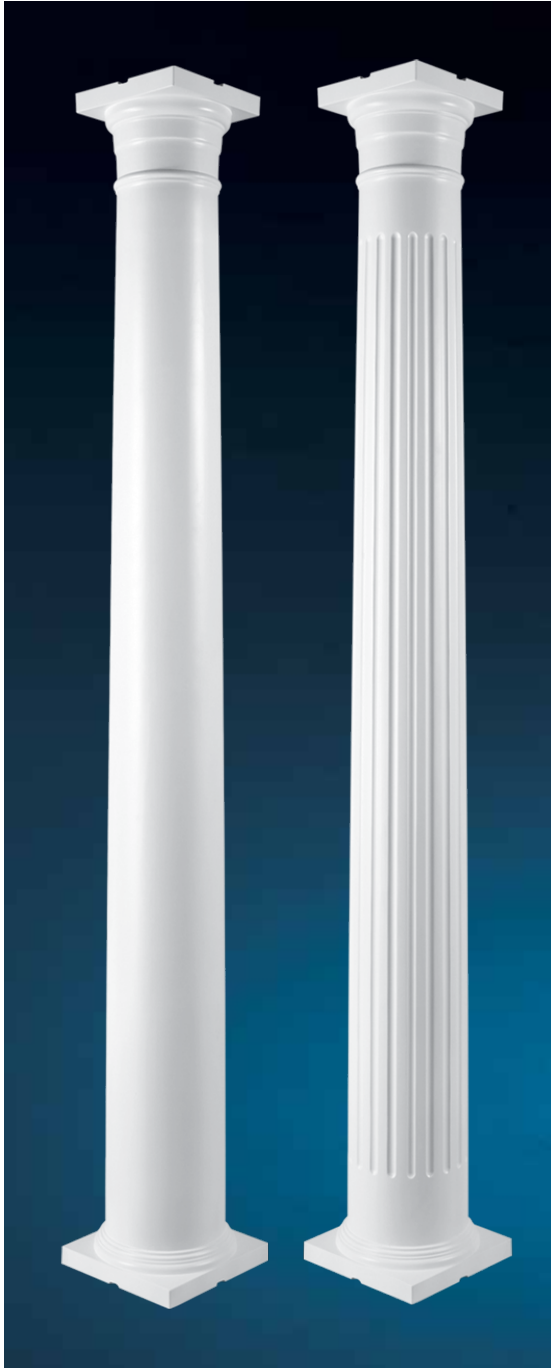




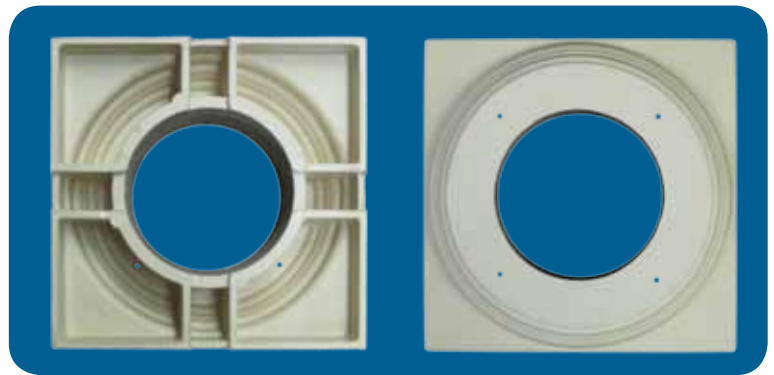
Turncraft's Poly Cap & Base for our Colonial Wood Column



Turncraft's Poly cap and base for our Colonial wood column is made from Reaction Injection Moulded Polyurethane.

This RIM Polyurethane is very strong and an extremely durable low maintenance material that works perfectly with our Colonial wood product line.

These load bearing cap and base are factory vented to allow adequate airflow for a long lasting product without the issues other cap and base products may have.



Poly Bottom View

Poly Top View

Designed for Turncraft's 6", 8", 10" and 12" columns, these cap and base will add beauty to the column while providing the necessary protection from moisture for many years of worry free use.

Turncraft
PO Box 2429
White City, Or
97503
800 423 3311



www.Turncraft.com

© 2012 Turncraft. All Rights Reserved